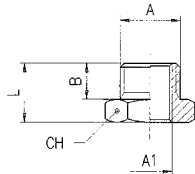


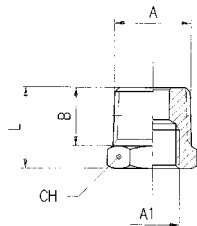
# Nickel Plated Brass Adaptors



## Reducing Bush



Code	A	A1	B	L	CH
RK05/10	1/8"	M5	6	10.6	14
RK10/13	1/4"	1/8"	8	13	17
RK10/17	3/8"	1/8"	9	14	19
RK10/21	1/2"	1/8"	10	15.5	24
RK13/17	3/8"	1/4"	9	14	19
RK13/21	1/2"	1/4"	10	15.5	24
RK13/26	3/4"	1/4"	12	17.5	30
RK17/21	1/2"	3/8"	10	15.5	24
RK17/26	3/4"	3/8"	12	17.5	30
RK17/33	1"	3/8"	13	19	36
RK21/26	3/4"	1/2"	12	17.5	30
RK21/33	1"	1/2"	12.5	20	33
RK26/33	1"	3/4"	13	19	36
RK33/42	1.1/4"	1"	22	29.5	49
RK42/50	1.1/2"	1.1/4"	25	33.5	55
RK42/55	2"	1.1/4"	24	34.5	65
RK50/55	2"	1.1/2"	24	36	65

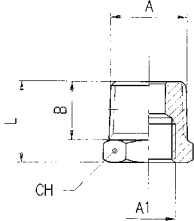


Code	A	A1	B	L	CH
RK10/13K	1/4"	1/8"	11	16	14
RK10/17K	3/8"	1/8"	11.5	16.5	17
RK10/21K	1/2"	1/8"	14	19.5	22
RK13/17K	3/8"	1/4"	11.5	16.5	17
RK13/21K	1/2"	1/4"	14	19.5	22
RK13/26K	3/4"	1/4"	16.5	23.5	27
RK17/21K	1/2"	3/8"	14	19.5	22
RK17/26K	3/4"	3/8"	16.5	23.5	27
RK17/33K	1"	3/8"	17	25	34
RK21/26K	3/4"	1/2"	16.5	23.5	27
RK21/33K	1"	1/2"	19	27.5	34
RK21/42K	1.1/4"	1/2"	22	31	45
RK26/33K	1"	3/4"	19	27.5	34
RK33/42K	1.1/4"	1"	22	31	45
RK33/50K	1.1/2"	1"	22	32	50
RK42/55K	2"	1.1/4"	25.5	35	66
RK50/55K	2"	1.1/2"	26	35	65

# Nickel Plated Brass Adaptors



## Reducing Bush



Code	A	A1	L
2095-10/M5	1/8"	M5	7.5
2095-13/10	1/4"	1/8"	8
2095-17/10	3/8"	1/8"	9.1
2095-17/13	3/8"	1/4"	9
2095-21/13	1/2"	1/4"	10.6
2095-21/17	1/2"	3/8"	10
2095-26/21	3/4"	1/2"	14
2095-33/26	1"	3/4"	20

